

Center for Education Excellence

- Delaware Education Spending
- Test Performance
- Need for Greater School Choice
- Q&A



Dr. Tanya Hettler, Ph.D.

Delaware Education Spending

Assessment Scores

- National Assessment of Educational Progress (NAEP).
- DE had the 4th worst overall test scores in 2022.
- Only New Mexico, West Virginia, and Oklahoma performed worse.

Educational Spending

- Delaware is 9th from the top in per-student spending.
- The 8 states that spend more all perform in the top half of the country on NAEP.

National Testing - NAEP

National Assessment of Educational Progress
a.k.a. "The Nation's Report Card."

2022 NAEP Results

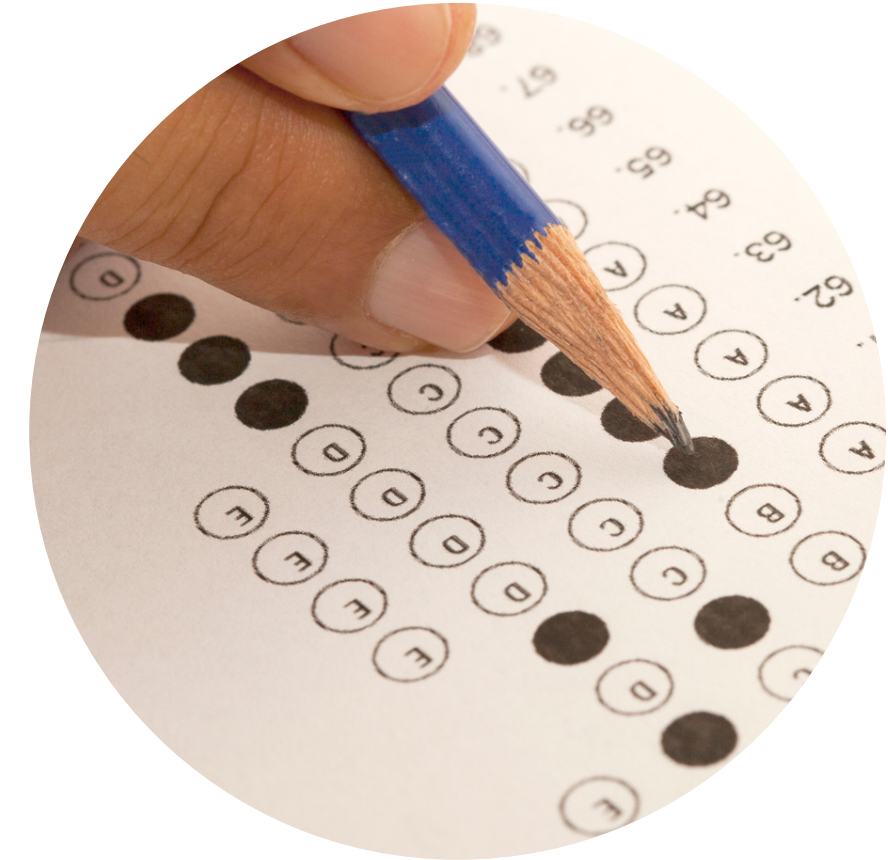
- 25% proficient in ELA - 1/4
- 22% proficient in math - less than a 1/4

2019 NAEP Results

- 32% proficient in ELA - about 1/3
- 34% proficient in math - 1/3

*2022 scores were worse than the pre-COVID 2019 scores.

*Accelerating a downward trend that started in 2013.



State Testing

Delaware Smarter Balance Testing 2022 results

2022 Smarter Balance Assessment - grades 3-8

- 42% proficient in ELA - less than 1/2
- 30% proficient in math - less than 1/3

2022 SAT scores for high school students

- 47% proficient in reading - less than 1/2
- 24% proficient in math - about 1/4
- 38% proficient on essays - slightly more than 1/3



Some Not-So-Fun Facts About Education in DE

- Too much spending on things other than teachers.
- Classes without Teachers across the state – No learning taking place.
- Too many requirements are needed to become a teacher in Delaware.





Recommendations

- *"More educational options."*
- *"Follow Pennsylvania's example by allowing greater options for kids who attend poorly performing districts and kids who live in poverty."*
- *"No moratorium on charter schools."*
- *"Reallocate education funds."*
- *"Adopt less restrictive teacher licensure requirements."*

QR Code & Url Link to School Assessment Results



<https://www.caesarrodney.org/cri-focus-area/Student-Assessment-Data-for-2019-and-2022-on-the-Smarter-Balanced-Assessment-and-SAT-for-All-Public-Schools-in-Delaware.htm>